



TRI-COUNTY

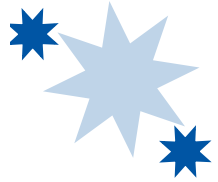
REGIONAL VOCATIONAL TECHNICAL
HIGH SCHOOL



VOCATIONAL PROGRAM SERVICE CATALOG



LOCATION



TRI-COUNTY
REGIONAL VOCATIONAL TECHNICAL
HIGH SCHOOL
147 Pond Street
Franklin, MA 02038

Barbara A. Renzoni
Superintendent Director

Mark A. Wood
Principal

Jean George
Vocational Director

Main Office: 508-528-5400

www.tri-county.tc



SCHOOL COMMITTEE

Paul Carbone, Chair
Franklin

Henry McDeed, Vice-Chair
North Attleboro

Jonathan Dowse, Secretary
Sherborn

Joseph Flynn
Plainville

Christine Geering
North Attleboro

Victor Knust Graichen
Wrentham

Louis E. Hoegler
Walpole

Karl D. Lord
Medfield

Robert McLintock
Seekonk

Michael Mushnick
Millis

Robert J. Rappa
Franklin

Linda Reynolds
Medway

Donald Seymour
Norfolk

MISSION STATEMENT



Through a rigorous, comprehensive program of vocational/technical and academic preparation, as well as a progressive system of individual support and guidance, we strive to maximize the potential of each student for successful transition:

- *to* full time employment
- *to* the pursuit of higher education
- *to* a personal commitment of life long learning
- *to* full participation as creative, responsible, productive American citizens



STATEMENT OF PHILOSOPHY

The Tri-County Regional Vocational Technical High School has two main goals: first, to offer students a unique opportunity for training and skill development in a particular area of choice that will lead to rewarding employment; second, to provide students with a well-rounded education that will enable them to participate as creative and responsible citizens in today's technical society.

Each student will be encouraged to develop to his/her capacity through a flexible and varied curriculum. The purpose of this curriculum will be to prepare students for maximum vocational and academic competence through the use of the most current equipment and materials. For this curriculum to succeed, all teachers must be proficient in their trade and subject areas, and must employ both established and innovative teaching techniques and methods of assessment. In addition, teachers should expect support from the Administration, the School Committee, and the parent community.

It is the responsibility of Tri-County to ensure that the curriculum includes a wide range of instructional settings, including classes for special education through college preparatory, all of which will aim at bringing students to their highest potential while demanding appropriate competencies. These programs should foster citizenship, social awareness, creativity, self-respect and a desire for life-long learning. It is the responsibility of the parents and community to support the schools' programs and to emphasize to their children the importance of education. It is the responsibility of the students to participate actively in their education and to make its acquisition their primary goal while they attend Tri-County.

As a supplement to the formal curricula, co-curricular and extracurricular activities will be offered to Tri-County students. Students will be encouraged to participate in these activities because such programs promote positive social behavior.

STATEMENT OF PHILOSOPHY



Tri-County intends that its vocational and technical education programs will complement, rather than compete with, all public education. Although autonomous in nature, this Regional District Committee will strive to satisfy educational needs of an occupational nature, while seeking the full benefit of guidance from area educational and industrial personnel. The school will also do everything possible to coordinate the area schools in the establishment of sequential K through 12 experiences necessary for appropriate career development programs.

Recognizing that education is on-going, Tri-County will strive to serve all age groups by maximum utilization of the school facility. A comprehensive adult and evening program in the practical arts, trade preparation, trade extension, and apprenticeship programs will be provided.

Realizing that adolescents have not had sufficient exposure to, nor experience with most occupations, Tri-County will provide an exploratory program. Recognizing the need to provide equal opportunity, the school will specifically endeavor to encourage and support males and females in exploring and participating in traditional and non-traditional shop areas. Students who elect to attend Tri-County will be those who seem best able to benefit from specific occupational training and will include the academically, physically, and socially disadvantaged.

Successful education is an on-going, ever-changing learning process involving students, parents, faculty, administrators and the School Committee as representative of member towns. Therefore, an atmosphere of mutual trust, respect, and decorum must be present throughout the entire Tri-County community.



GOALS

1. The student as a worker should possess the following abilities:

- **Accessing information** - acquiring, organizing, and maintaining data as well as interpreting and communicating information.
- **Demonstrating interpersonal skills** - working as a member of a team, teaching, and servicing others, collaborating, leading, negotiating, and working with people from culturally diverse backgrounds.
- **Using resources** - allocating time, money, materials, space and human resources
- **Understanding systems** - operating within social, political, and organizational systems, monitoring and correcting performance, and designing or improving systems.
- **Using technology** - selecting and applying technologies to specific tasks including the use of computers and other emerging technologies to process information.

2. The student as lifelong learner should possess the following attributes:

- **Literacy** - reading, speaking, listening, writing, and mathematics.
- **Thinking** - the ability to think creatively and critically, make decisions, and solve problems.
- **Intellectual curiosity** - interest and enthusiasm for learning-scientific and technological literacy.
- **Versatility** - the ability to express oneself in more than one medium

3. The student as a citizen should demonstrate:

- **The ability to make decisions** on ethical grounds through the analysis of the practical and ethical consequences of alternative decisions
- **Personal qualities** including a sense of individual self-esteem and community responsibility, sociability, self-management, and integrity
- **Social responsibility** - to understanding the consequences and effects of one's action
- **A work ethic**- and understanding that work gives dignity and meaning to life as well as contributing to the good of the community
- **Knowledge of cultures & languages** - understanding and appreciating different world cultures, languages, and their interrelationships.
- **Citizenship** - being informed on public issues and voting - understanding the global economy.
- **A sense of community** - development of a desire to contribute one's time and effort to the good of the community.



PROGRAM SERVICE POLICY

Staff and community members may avail themselves of the services of the school's vocational and technical programs to the extent that:

1. They have the permission of the Vocational Director (in writing).
2. Job falls into curriculum
3. Job is not for industry.
4. They do not enjoy financial gain.
5. Job is not too complicated, thereby diminishing student interest.
6. Job does not involve the constant and long-term use of shop equipment and tools.

Tri-County is not responsible for any item(s) brought into the school by staff members, students, or district residents. Anyone taking personal property to school for repair or for any reason does so at his or her own risk, bearing in mind that the instructor or school district cannot be held culpable for loss or damage.



VOCATIONAL PROGRAMS

- **AUTO BODY/AUTO TECHNOLOGY**

Cost: Parts and materials plus 20% surcharge.

Sales tax - 5% on parts and materials.

Service charge - flat rate charge at \$15.00 per hour from Mitchell flat rate manual.

(see service charge on page 10)

- **CARPENTRY**

- **ELECTRICAL**

- **FACILITIES MANAGEMENT**

- **HVAC&R**

- **PLUMBING**

Cost: Parts and materials plus 20% surcharge.

Sales tax - 5% on parts and materials.

Service charge - 25% of industry standard.

AUTO TECHNOLOGY



Service Charge *

Align Front End (2 wheels)	\$25.00
(4 wheels)	\$35.00
Balance Wheels (weights additional)	\$2.50 each
Lubrication and/or Oil Change Including Disposal Fee	\$6.00
Recharge A.C. (freon additional).....	\$18.00
Reface Brake Drums.....	\$5.00 each
Reface Rotors.....	\$6.00 each
Reline Brakes (each wheel)	\$6.00
Repair Tire	\$3.00
Rotate Tires	\$3.00
Tire Mounting	\$1.00 each
Automatic Transmission Fluid Service.....	\$25.00

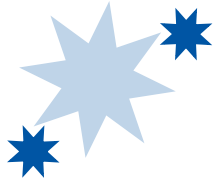
* parts and materials plus 20% surcharge
Sales tax - 5% on parts and materials



TECHNICAL PROGRAMS

- **Cosmetology**
(see page 13 for salon services)
- **Culinary Arts**
(see page 14 for price list)
- **Early Childhood**
(see page 15 for programs and services)
- **Graphic Communications**
Cost: Parts and materials plus 20% surcharge.
Sales tax - 5% on parts and materials
Add 20% facilities charge

COSMETOLOGY



The Salon at Tri-County

Monday-Friday Appointments Available

508-528-5400 ext. 167

Menu of Services

Bang Trim	\$2.00
Haircut with Blow-Dry/Set	\$8.00
Shampoo & Set or Blow-Dry	\$6.00
Up-do	\$10.00 and up
Virgin color application*	\$25.00 and up
Retouch color application*	\$20.00
Cap Highlight*	\$20.00
Full Foil Highlight*	\$30.00 and up
Partial Foil*	\$20.00
Temp Color Rinse	\$1.00
Demi-Permanent Color	\$20.00 and up
Permanent Wave*	\$25.00 and up
Partial Permanent Wave***	\$20.00
Scalp Treatment***	\$5.00
Add-on Foils	\$10.00

Facial Services:

Facial (Includes Makeup)	\$7.00
Eye Brow Wax	\$4.00
Upper Lip Wax	\$4.00
Chin Wax	\$4.00

Nail Services:

Manicure	\$6.00
Polish Change	\$3.00
Paraffin Hand Treatment	\$3.00

Chemical Hair Relaxer (No Heat Press).....\$35.00

* Includes Blow-Dry

** Includes Cut



CULINARY ARTS

Menu

Gerry's Place

Food cost plus 20%

Senior Discount 10%

Banquets

Non-School Functions

Food cost plus 20%, plus labor

Other items (e.g. flowers & linens) additional

Catering

Customer pick up

Food cost plus 20%

School Functions

Food cost plus the cost of labor, linens, etc.

Bakery

Food cost plus 20%

EARLY CHILDHOOD CAREERS

3 day program - consists of three 2 hr. sessions. We offer a morning session (W/TH/F 8:55-10:55 A.M.) and an afternoon session (T/W/TH 11:45-1:45 P.M.). Children must be 3 years of age by September 15th, and not older than 4 years and 9 months.

1 day toddler program - meets Monday mornings from 9:15-10:45 A.M. A success oriented program that meets the needs of 18 months - 2 1/2 year old children. Parent or Guardian is required to stay in the classroom during the toddler program.

The following fees will be in effect on September 1, 2007

3 day program - \$24.00 per week

1 day program - \$6.00 per session

The Tri-County Regional Vocational Technical School District is an equal opportunity employer and coeducational high school and does not discriminate because of race, creed, color, ethnic origin, gender, age, sexual orientation, handicap, or disability in its employment policies, in the enrollment of students, or in eligibility for programs and activities in compliance with Title VI of the Civil Rights Act of 1964, Title IX of the 1972 Educational Amendments, and Section 504 of the Rehabilitation Act of 1973. To contact the Title VI, Title IX or 504 Coordinator call or write Jean Mallon, Director of Guidance, Tri-County RVTHS, 147 Pond Street, Franklin, MA 02038, 508-528-5400. Funding of this publication is made possible through Public Law 105.332.